

5


Operator's manual
Manuel d'utilisation
Bedienungsanleitung
Manuale d'uso
Manual para el usuario
Manual De Instruções

ARP



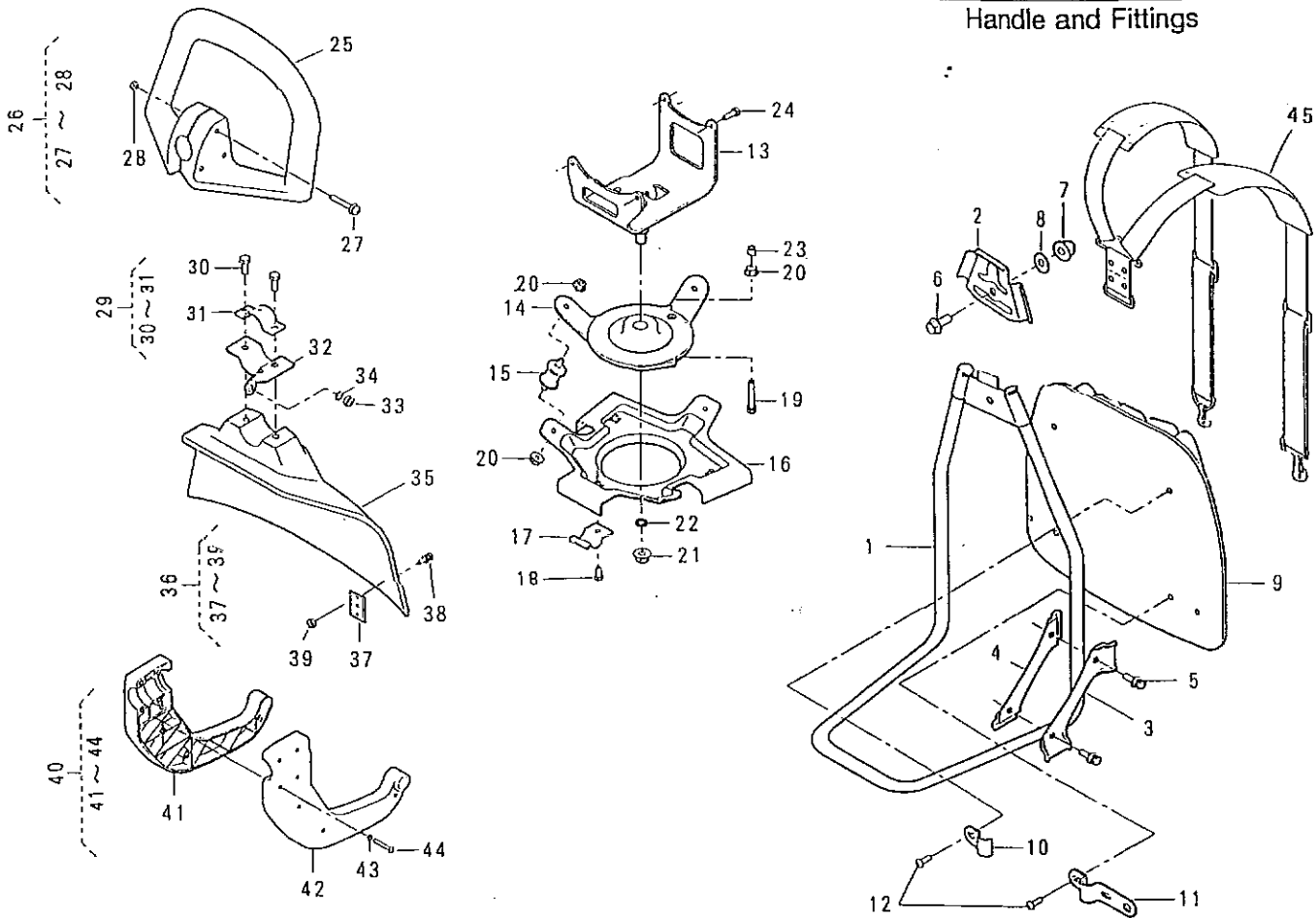
CUTTER
BROSSAILLEUSE
PUGLIATORI
ASPZZOLE
CORTADORA DE MALEZAS
CORTADORA DE ESCOVAS

VR5400

-  Read the following instructions before use.
- (F)** Lire obligatoirement avant la mise en marche.
- (D)** Vor Inbetriebnahme unbedingt diese Anleitung lesen.
- (L)** Prima di usare il decespugliatore non tralasciate di leggere quanto segue.

VRS400(TL52)

Handle and Fittings



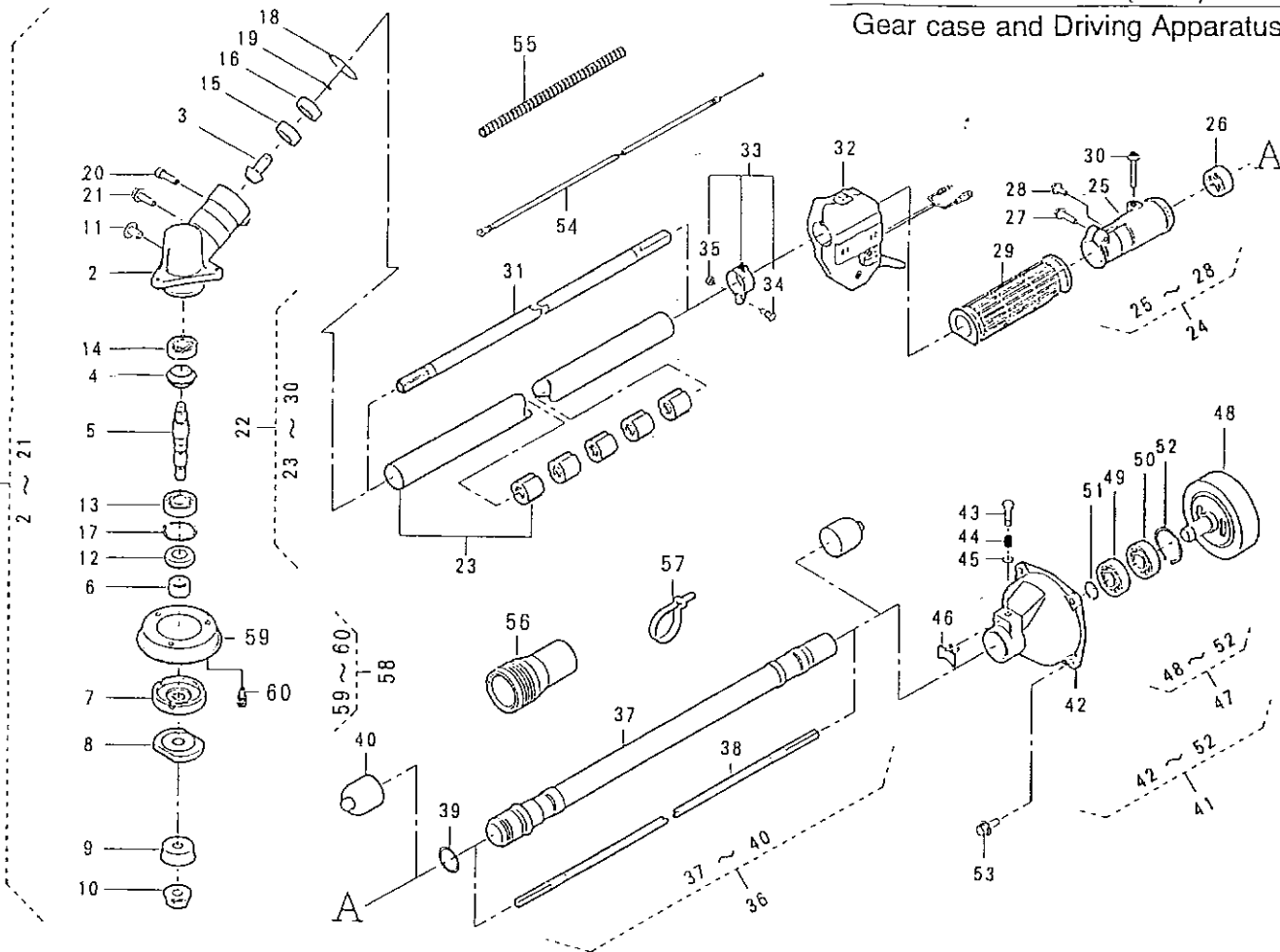
46013-508

REF. NO.	PARTS NO.	PARTS NAME	Q' TY			RECOMM. (%)	REMARKS
					INCLUDING		
1	36122 119 42	KNAPSACK FRAME	1			3	
2	11113 290	STAY	1			3	
3	11113 298	STAY	2			3	
4	11113 299	STAY	2			3	
5	315L 0616	(+)HEXAGON BOLT(W/SW, PW)	M6x16	4		3	
6	335L 0815	FLANG BOLT	M8x15	1		3	
7	583L 0800	FLANGE CAP NUT	M8	1		3	
8	611L 0800	PLAIN WASHER	M8	1		3	
9	91027 119	KNAPSACK PAD		1		3	
10	11021 101	KNAPSACK PAD FITTING		2		3	
11	11021 105	KNAPSACK PAD FITTING		2		3	
12	475L 0516	(+)TAPPING SCREW	M5x16	6		3	
13	11020 132	ENGINE SUPPORT CP		1		1	
14	11121 106 09	VIBRO-ISOLATING SUPPORT CP		1		3	
15	36005 111	VIBRO-ISOLATING RUBBER		3		9	
16	11044 171	BASE		1		3	
17	11011 123	CLAMP		3		3	
18	318L 0512	(+)HEXAGON BOLT(W/SW)	M5x12	3		3	
19	315L 0630	(+)HEXAGON BOLT(W/SW, PW)	M6x30	1		3	
20	571L 0600	FLANGE NUT	M6	7		3	
21	513L 1000	NUT	M10	1		3	
22	661L 1000	SPRING LOCK WASHER	M10	1		3	
23	36015 101	STOPPER RUBBER		1		1	
24	31057 139	HEXAGON BOLT	M5x25	4		3	
25	51023 142	SINGLE HANDLE		1		3	

I^e SERIE

VRS400(TL52)

Gear case and Driving Apparatus

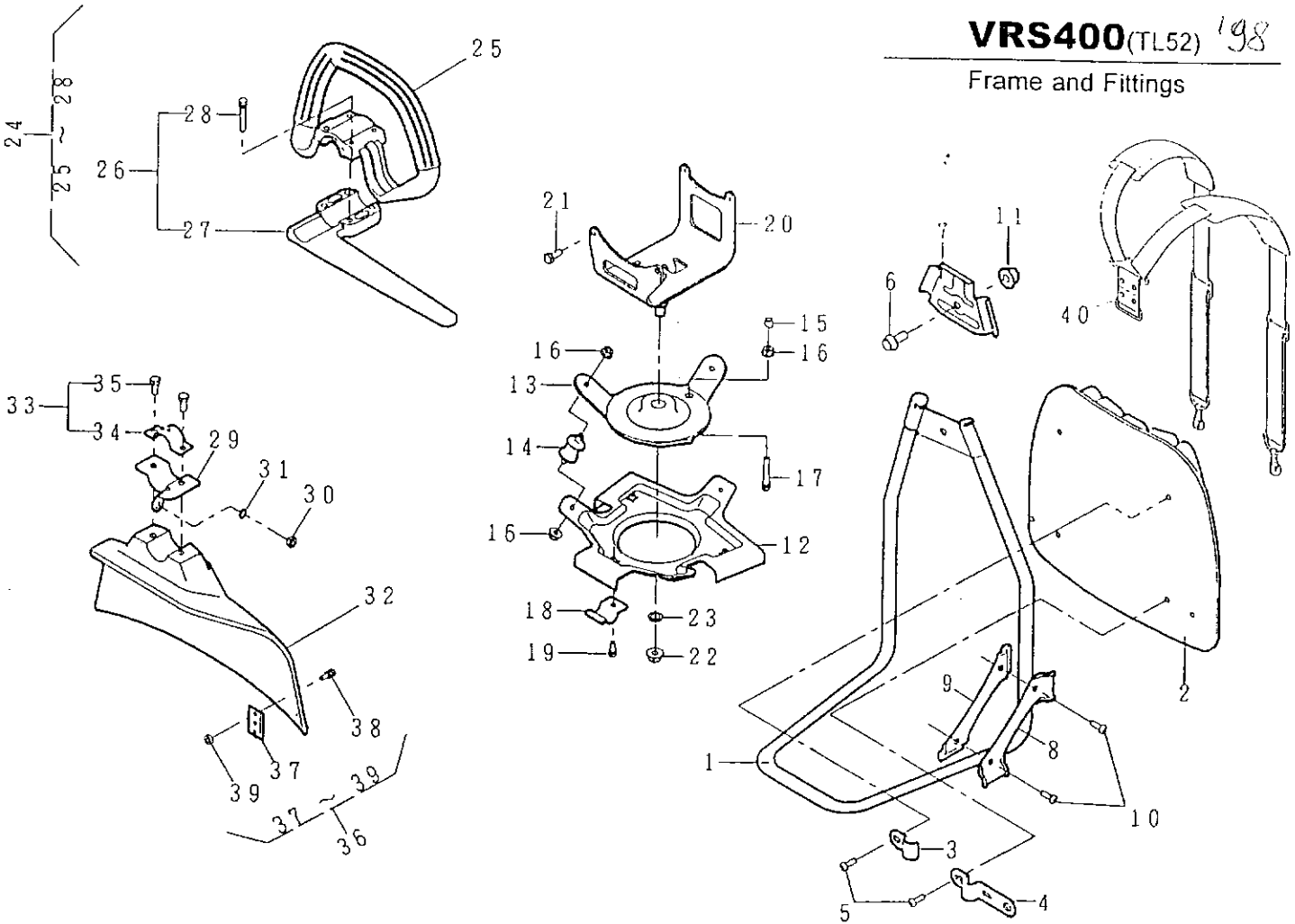


46013-508

REF. NO.	PARTS NO.		PARTS NAME	Q' TY		Dec. 1996	1 / 5
				INCLUDING		RECOMM. (%)	REMARKS
1	71008	294	GEAR CASE ASS'Y	1			
2	51001	221	GEAR CASE	1			
3	78002	130	BEVEL PINION	1			
4	78001	102	BEVEL GEAR	1			
5	64001	144	SPLINE SHAFT	1			
6	61001	119	SPLINE SLEEVE	1			
7	11001	150	HOLDER(A)	1			
8	11002	126	HOLDER(B)	1			
9	36068	125	GUARD	1			
10	31001	106	SAW LOCK NUT	1			
11	377L	0810	(+) BINDING SCREW	1			M8x10
12	61002	128	OIL SEAL	1			TC 17x32x8
13	919B	6201	BEARING	1			6201C3
14	913B	0629	BEARING	1			629
15	913B	6000	BEARING	1			6000
16	912B	6000	BEARING	1			6000ZZ
17	811V	3200	C-SNAP RING FOR HOLE	1			φ 32
18	811V	2600	C-SNAP RING FOR HOLE	1			φ 26
19	812V	1000	C-SNAP RING FOR SHAFT	1			φ 10
20	419U	0630	SOCKET SCREW	1			M6x30
21	335M	0512	FLASNGE BOLT	1			M5x12
22	71009	364	MAIN PIPE ASS'Y	1			
23	71130	135	MAIN PIPE C.P.	1			
24	71077	114	FLEX. CONNECTOR ASS'Y	1			
25	31014	115	FLEX. CONNECTOR	1			

VRS400(TL52) 198

Frame and Fittings

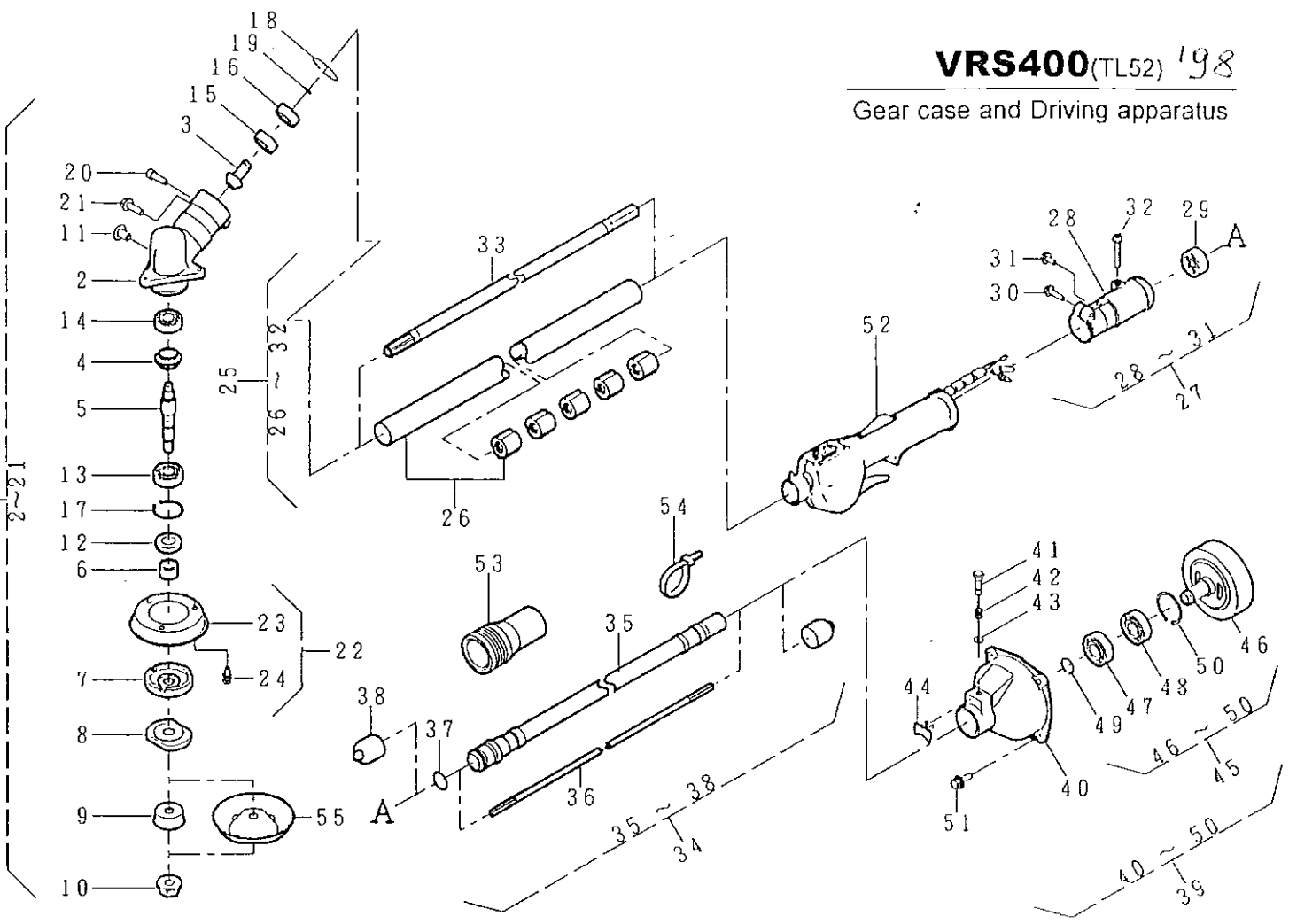


46013-585

REF. NO.	PARTS NO.			PARTS NAME	Q'TY			JUN. 1998	4-5	REMARKS
					INCL	EXCL	TOTAL	RECOMM. (%)		
1	36122	113	42	KNAPSACK FRAME	1				3	
2	91027	119		KNAPSACK PAD	1				3	
3	11021	101		KNAPSACK PAD FITTING	2				3	
4	11021	105		KNAPSACK PAD FITTING	2				3	
5	475L	0516		(+)TAPPING SCREW			M5×16	6	3	
6	335L	0815		FLANGE BOLT			M8×15	1	3	
7	11113	290		STAY	1				3	
8	11113	298		STAY	2				3	
9	11113	299		STAY	2				3	
10	315L	0616		(+)HEXAGON BOLT(W/SW, PW)	4				3	
11	583L	0800		FLANGE CAP NUT			M8	1	3	
12	11044	171		BASE	1				3	
13	11121	106	09	VIBRO-ISOLATING SUPPORT CP	1				3	
14	36005	111		VIBRO-ISOLATING RUBBER	3				9	
15	36015	101		STOPPER RUBBER	1				3	
16	571L	0600		FLANGE NUT			M6	7	3	
17	315L	0630		(+)HEXAGON BOLT(W/SW, PW)			M6×30	1	3	
18	11011	123		CLAMP	3				3	
19	318L	0512		(+)HEXAGON BOLT(W/SW)			M5×12	3	3	
20	11020	132		ENGINE SUPPORT C. P.	1				1	
21	31057	139		HEXAGON BOLT	4				3	
22	513L	1000		HEXAGON NUT	1				3	
23	661U	1000		SPRING LOCK WASHER	1				3	
24	71304	102		SINGLE HANDLE SET	1				-	
25	51023	145		SINGLE HANDLE	1				3	

VRS400(TL52) '98

Gear case and Driving apparatus



46013-585

REF. NO.	PARTS NO.	PARTS NAME	Q'TY	JUN. 1998		RECOMM. (%)	REMARKS
				INCLUDING	1 5		
1	71008 294	GEAR CASE ASS'Y	1			-	
2	51001 221	GEAR CASE	1			3	
3	78002 130	BEVEL PINION	1			5	
4	78001 102	BEVEL GEAR	1			5	
5	64001 144	SPLINE SHAFT	1			8	
6	61001 119	SPLINE SLEEVE	1			10	
7	11001 150	HOLDER(A)	1			10	
8	11002 126	HOLDER(B)	1			5	
9	36068 125	GUARD	1			12	
10	31001 106	SAW LOCK NUT	1			15	
11	377L 0810	(+)BINDING SCREW	1		M8×10	3	
12	61002 128	OIL SEAL	1		TC 17×32×8	10	
13	919B 6201	BEARING	1		6201C3	5	
14	913B 0629	BEARING	1		629	5	
15	913B 6000	BEARING	1		6000	5	
16	912B 6000	BEARING	1		6000ZZ	5	
17	811V 3200	C-SNAP RING FOR HOLE	1		φ32	4	
18	811V 2600	C-SNAP RING FOR HOLE	1		φ26	4	
19	812V 1000	C-SNAP RING FOR SHAFT	1		φ10	4	
20	419U 0630	SOCKET SCREW	1		M6×30	3	
21	335M 0512	FLANGE BOLT	1		M5×12	3	
22	71001 117	GRASS COVER SET	1			-	
23	11004 129 09	GRASS COVER	1			4	
24	318L 0510	(+)HEXAGON BOLT(W/SW)	3		M5×10	3	
25	71009 384	MAIN PIPE ASS'Y	1			-	

